



Fundy Model Forest

~Partners in Sustainability~

**Tree Islands: Leave Patches as Refugia for Vascular Plants and Bryophytes
in Harvest Blocks**

Authors: Drs. Mark Roberts and Kate Frego



Natural Resources
Canada

Ressources naturelles
Canada

Canada



Fundy Model Forest
 701 Main St., Suite 2, NB E4E 7H7
 Ph: 506-432-7575 1-800-546-4838 Fx: 506-432-7562
 projects@fundymodelforest.net

FINAL REPORT
for fiscal year: 2004 - 2005

Title of Project Tree islands: Leave patches as refugia for vascular plants and bryophytes in harvest blocks	
Name of Project Proponent Drs. Mark Roberts and Kate Frego	Date 30 September 2005
Organization Univ. of New Brunswick – Fredericton and Saint John	Position Professors
Phone Roberts 506-453-4923 Frego 648-5566	Fax 453-3538 648-5811
Email roberts@unb.ca frego@unbsj.ca	
Research by Individual () Team (X)	Length of Study (years) 4th of 5
Working Group ETM	Start April 2004 End March 2005
Research Partners J.D. Irving Ltd., Village of Petitcodiac	
10 Key Words biodiversity, bryophytes, disturbance, harvesting, herbaceous species, leave patches, stand structure, tree islands, understory, vascular plants	

EXECUTIVE SUMMARY

In the 2004-2005 project year, work progressed as planned. Monitoring of vegetation, environmental variables and blowdown was continued for the 8 existing tree islands. One reference island was established, and microclimate monitoring continued for tree islands and within a reference area, with a focused effort around one island immediately before and after snowfall.

1. Our sampling intensity captured 73% and 78% of the bryophyte and vascular species (respectively) in the area.
2. **Representivity.** The initial composition of experimental Islands is very similar to their surrounding block (high representivity), with a core of common species. Islands are variable in species content, especially in vascular flora; hence, individual islands are only locally representative. Inside areas of islands are dynamic in species richness and composition of both bryophytes and vascular plants; however, this must next be compared to reference areas to account for natural dynamics.
3. **Post-harvest Effectiveness.** Understory changes inside islands are much less marked than outside, with edges intermediate but perhaps more similar to outside. Microclimatic “edge effect” appears to penetrate less than 25 m into island, but differs considerably with cardinal direction. Major blowdown occurred in first year after harvest, but continues in second year.

Introduction and background

Leave patches or “tree islands” that are left in clearcuts and variable retention harvest blocks appear to function as refuges for some sensitive species of the herbaceous layer (i.e. non-woody plants of the forest floor) and the structural elements upon which they depend (e.g. Fenton and Frego 2004, Fenton et al. 2003, Ross-Davis and Frego 2002, Ramovs and Roberts 2003), but we do not know the critical characteristics of patches that would ensure preservation of these species. Other researchers have shown that microclimatic changes associated with clearing of the forest matrix penetrate forest edges on the order of tree-lengths (e.g. Chen 1992), indicating that only part of a leave patch is likely to escape “edge effects”. However, the sensitivity of the understory species to the gradient of microclimatic edge effect is unknown.

Our preliminary work over three years showed that patches left as part of “standard operating procedure” are smaller than the expected 0.25ha, and are often lacking in species and critical elements of stand structure, such as snags, probably because the patches are delineated without these features or species in mind; in fact, they are often located in unique habitats, such as wet areas, within the harvest block. In addition, edge:volume ratios are not minimized (i.e. islands are not isodiametric) because they often follow drainage features such as ephemeral streams. To date it appears that post-harvest microclimatic and other changes on the periphery of the patches extend so deeply into these patches that they are too small to protect the habitats and species contained within. In addition, trees along the newly exposed forest edge are subject to higher winds and may experience a greater proportion of windthrow (‘blowdown’), extending edge effects even further into islands.

The overall goal of this project is therefore to assess the functionality of leave patches of various sizes as plant refugia (including prediction of edge effects), and sources of critical elements of stand structure. Recommendations to follow from this project will include minimum patch size based on thresholds of response of understory species to edge effects in the patches, and number and placement of patches within harvest blocks, based on comparison of species and structural features contained within the patches vs the surrounding areas.

This report focuses on the results of 2004-2005; *additional information from 2005-2006 has been added where available (italicized).*

PROJECT OBJECTIVES:

1. Assess representivity of patches in harvest blocks in terms of understory species and habitat features.
2. Determine extent of edge effects in terms of (a) microclimatic change and (b) responses of understory species and guilds. Conversely, determine how much of the patch is “functional core” that escapes the immediate influence of the surrounding cutover (relative to natural change occurring in reference areas).
3. Determine patch dynamics, in terms of changes in patch size, and hence the functional core size, associated with blowdown. Do patches shrink symmetrically?

4. Provide recommendations with respect to the placement, minimum size and configuration of patches to insure that refugia for vascular plants and bryophytes and their habitats are maintained.

Workplan objectives for 2004-5:

1. Continue monitoring vegetation and blowdown in permanent plots established in and outside patches in 2002 and 2003.
2. Document microclimatic conditions and community dynamics in reference areas in unharvested areas. It is critical to compare community change in patch cores to that in reference areas to establish whether the centers are free of edge effect from anthropogenic disturbance.
3. Quantify new blowdown in existing islands.

METHODS

Five 1.0ha islands were delineated by Primary Investigators and graduate students, with approval from JDI personnel, as experimental patches in upland cut blocks. Two established in 2002 are within the Holmes Brook watershed (HB1, HB2), while two (Sanatorium Road SR, Babcock Brook BB; established in 2003) and one reference island (REF1; 2004) are located nearby (approx 10 km) in the Pollett River watershed. *A second reference island (REF2; 2005) is located in the Holmes Brook watershed.*

For each, transects on cardinal directions were established, each passing through the center, with belts of 5 1x1m quadrats set at 50 and 5 m from the island edge, in the area to be clearcut, and at 0, 25, 35 m inside the island (Fig. 1). A block of 10 quadrats was positioned at the center of the island.

All quadrats were marked with short wooden stakes driven to ground level, and mapped by GPS. All were sampled before harvest, recording abundance of vegetation (vascular and bryophyte species), environmental features (microtopography, canopy cover, etc.), stand structure (sizes and numbers of trees, snags, saplings and shrubs), and amount of coarse woody debris in four decay classes.

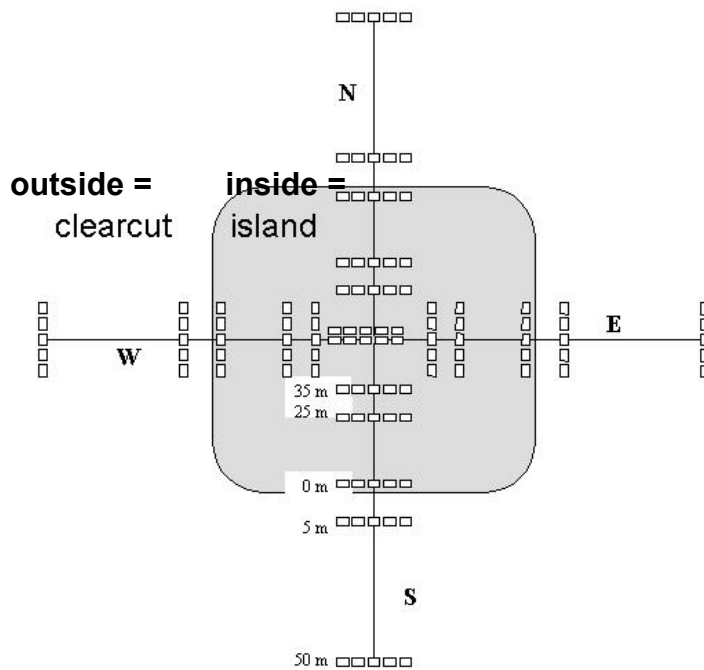


Figure 1. Schematic of sampling design for 1.0ha islands. 1x1m quadrats established in belts of 5, on 4 cardinal transects, at 50 and 5 m into future clearcut, and at 0, 25, and 35m inside island, with a block of 10 quadrats at island center, 50 m from island edge.

The forest block around the four experimental islands was harvested by JDI soon after pre-harvest sampling, according to their standard management prescriptions (e.g. clearcut, scarification, planting).

1: Post-harvest monitoring of existing permanent plots (2003, 2004, 2005). Permanent quadrats in the reference island and experimental islands (relocated in the spring following harvest for the latter) were resampled for both vegetation and environmental features, including disturbance conditions (slash, machine tracks, exposed mineral soil, etc.). Microclimatic conditions (relative humidity, solar radiation and ground temperature) were monitored with dataloggers (2 each of models CR-10 and 21X; Campbell Scientific & 10 Hobo Pro Series; Onset Computer Corporation) throughout the summer on selected plots in a rotating design, representing the full gradient from the patch center to 50 m into the cutover.

2: Blowdown. Islands were surveyed annually (2002, 2003, 2004, 2005) for newly broken or tipped up trees, recording species, diameter, height and location relative to edge and compass direction (Trimble GPS unit).

Analyses

Evaluation of sampling intensity

Because the spatial scale of variability for understory components (especially bryophytes) is poorly documented, species accumulation curves were created to determine the level of certainty associated with our sampling design.

Representivity of island flora:

Pre-harvest understories in islands and surrounding cutblock were compared in terms of richness, diversity and species composition to assess the ability of the interior of each island ($\geq 25\text{m}$ from edge) to capture the features of the impact area it was intended to represent.

Assessing early post-harvest changes within islands:

Pre- and post-harvest vegetation, structure and environmental characteristics in experimental and reference islands were compared (a) within islands (excluding edge quadrats) vs surrounding cutovers, (b) at various distances (25, 35, 50m) from the island edge, both overall and (c) among transects (N,S,E,W). Comparisons with the reference island (a) will allow us to quantify post-harvest changes accounting for natural dynamics in closed forest communities in an intact forest matrix. Comparison (b) will allow us to address edge effects in terms of both microclimatic changes and species responses, allowing determination of the extent of an island that is not equivalent to reference conditions; this will ultimately contribute to determination of minimum patch size. Comparison (c) will determine the role of aspect in the response of the forest plant community; it will ultimately contribute to recommendations for patch shape and orientation.

Blowdown and patterns of island shrinkage:

Blowdown was compared as total numbers and basal area of trees, as well as by species. Location (compass quadrant) of blowdown was assessed to identify portions of patches susceptible to loss, e.g. those exposed to prevailing winds.

PRELIMINARY RESULTS

Due to machinery breakdown and delays, scarification of islands established in 2003 was delayed beyond the sampling season. As a result, the cutover sampling of vegetation was delayed till 2004. The unexpected sampling of after harvest but before scarification provides a valuable opportunity to isolate effects of scarification from harvest per se.

Disturbance and environmental data were both sampled for all quadrats prior to scarification as scheduled (Table 1). Sampling in the first reference island (REF1) was completed in 2004; however, identification of bryophytes from it was completed too recently to be incorporated into analyses for this report. (*Establishment and sampling of REF2 was completed in 2005.*)

Table 1. Stages of sampling completed for each island, according to year. For island abbreviations, see text.

Island	Pre-harvest	Year 1	Year 2	Year 3
HB1	2002	2003	2004	2005
HB2	2002	2003	2004	2005
BB	2003	2004	2005	
SR	2003	2004	2005	
REF1	2004	2005		
REF2	2005			

Evaluation of sampling intensity

The species accumulation curve for vascular plants reaches a plateau more rapidly than that for bryophytes (Fig. 2); however, individual islands show considerable variability (Fig. 3). Based on these curves, our use of 110 quadrats should capture 79% and 73% of vascular plant and bryophyte species (respectively) known to occupy the areas sampled (Table 2). The 50 quadrats used to represent the inside of each island (i.e. not including those at the edge) can be expected to capture over 60% of those vascular plant and bryophyte species.

Table 2. Predicted species capture within islands (based on Fig. 2 with n>400 quadrats), relative to totals found in entire cutblock. 110 quadrats = total for each experimental island, island interior = 50; outside island = 40 outside.

# quadrats	vascular spp		bryophyte spp	
	#	%	#	%
110	57	79.2	78	72.8
50	48	66.1	66	62.2
40	45	62.0	62	57.9
Overall flora	72	100	107	100

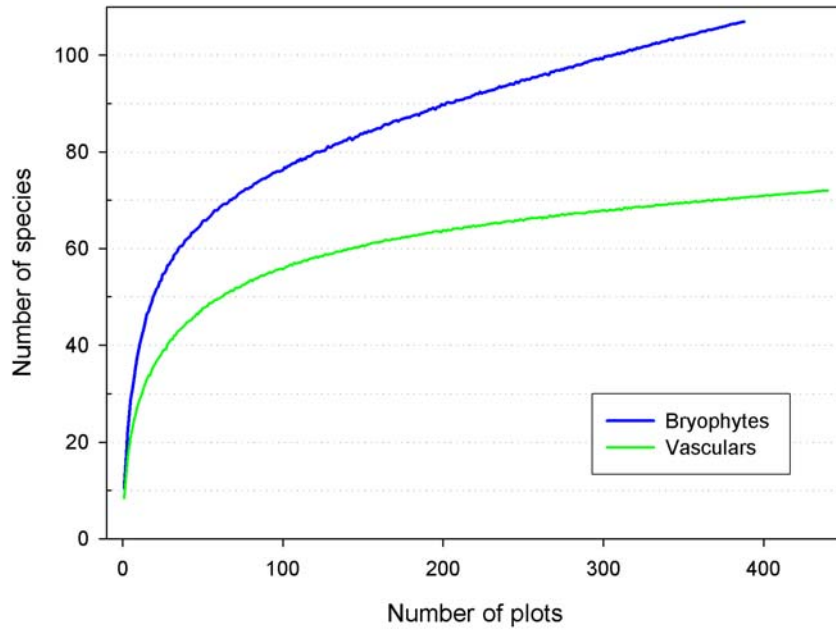


Fig. 2. Theoretical species accumulation curves for vascular (lower line) and bryophyte (upper line) species within tree island study area (all samples pooled). N>400 quadrats.

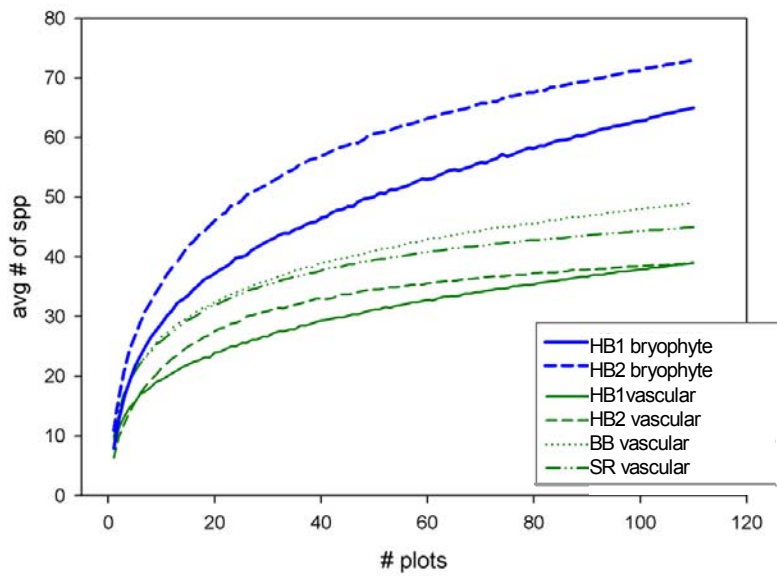


Fig. 3. Species accumulation curves for vascular and bryophytes, within individual islands. The upper two lines are bryophytes, the lower four are vascular species. N = 110 quadrats per island.

Representivity

Visual comparisons of the species found in 50 quadrats within the islands vs those found in the surrounding cutblock were made using Detrended Correspondence Analysis (DCA). Pooled, the four experimental islands captured high proportions of both vascular and bryophyte species (Fig. 3A,B). Variability among individual islands was evident (Fig. 4 A,B), with more pronounced differences for the vascular plant communities. For example, island SR contains more *Sphagnum girgensohnii*, a bryophyte indicative of slightly wetter forest conditions; spruces (*Picea* sp.) were more abundant in island HB1, while islands SR, BB, and HB2 each had greater proportions of balsam fir (*Abies balsamea*). Similarly, differences in island flora (outlined by “envelopes” on the figures) were influenced by different abundances of species found in them. Individual island compositions were most similar to their nearest neighbour islands: HB1-2, vs SR-BB.

The species and their presence inside vs outside the islands are documented in Appendix A. As a case study, using the pooled islands as “lifeboats” for the entire study area, 12 species of liverworts, 14 of moss and 7 of vascular plants would not be protected, i.e. they are present in the area but are not found within the four islands (Table 3).

Post-harvest response

Initial responses to harvest approximated our expectations. In the first year after harvest, plots outside the island showed high frequencies of bryophyte species loss with few additions, whereas plots inside islands showed a normal curve of losses and gains with most showing no change; edge plots were intermediate (Fig. 5).

Using pooled quadrats from the two islands for which two years of post-harvest data are available (HB1, HB2), DCA showed a distinct shift in vascular species composition from pre-harvest to one and two years post-harvest outside the islands, with far less change inside (Fig. 6). As expected, edges were intermediate but showed a notable increase in variability (as seen in spread of quadrats, or area of outlined areas). (Parallel analyses of bryophyte data will be completed soon.)

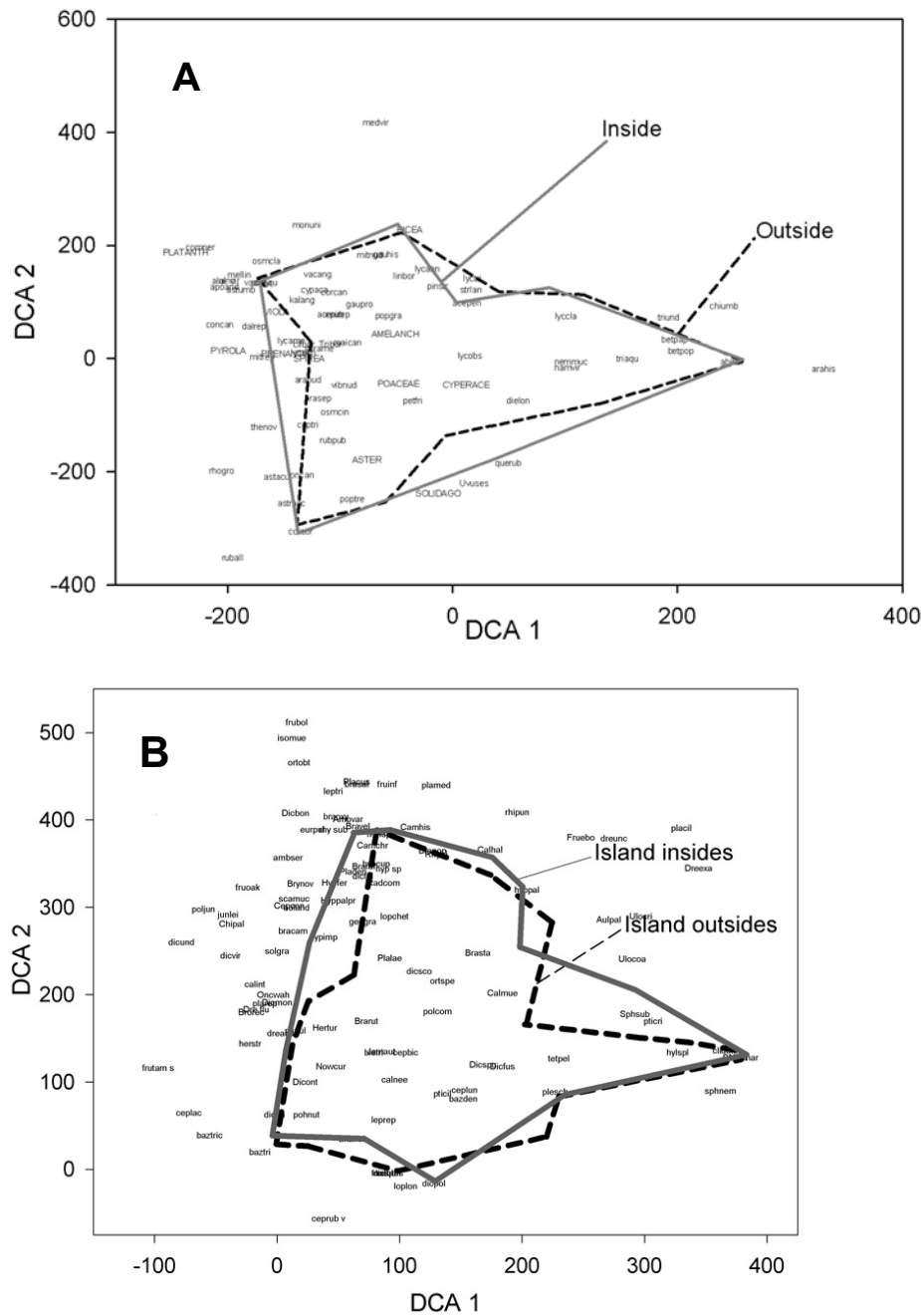


Fig. 3. Comparison of pooled pre-harvest species composition of (A) vascular plants, and (B) bryophytes, inside vs outside islands. Envelopes encase all quadrats of treatment, and degree of overlap is indicative of degree of representivity at this scale.

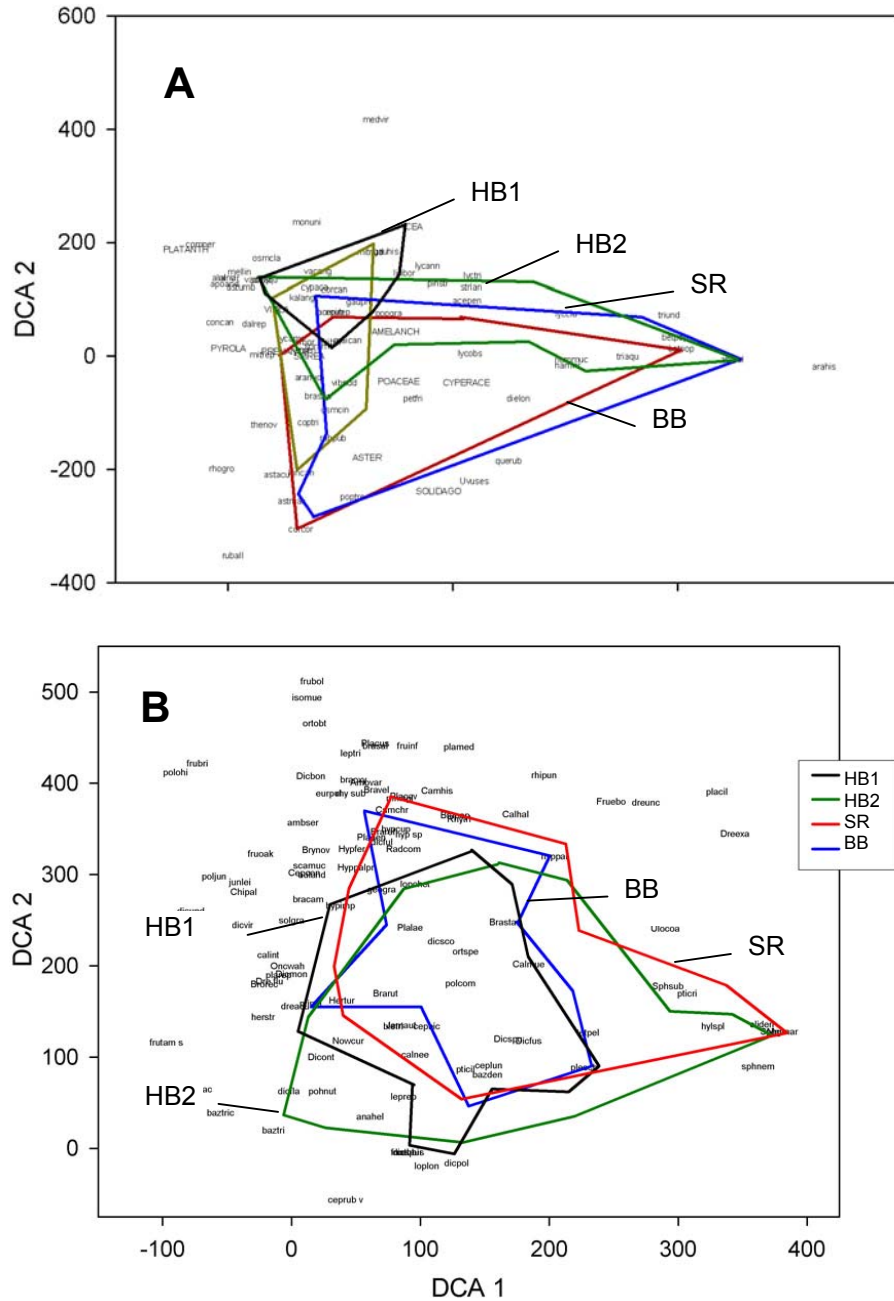


Fig. 4. Comparison of pre-harvest composition for (A) vascular, and (B) bryophyte species by individual island. Degree of overlap (envelopes encase all quadrats for each island) is indicative of similarity in species and abundance.

Table 3. List of species not protected within experimental islands.

<p>Unprotected liverworts:</p> <p><i>Bazzania tricrenata</i> <i>Calypogeia muelleriana</i> <i>Calypogeia neesiana</i> <i>Cephalozia connivens</i> <i>Chiloscyphus pallescens</i> <i>Frullania bolanderi</i> <i>Frullania brittonae</i> <i>Frullania eboracensis</i> <i>Frullania tamarisci</i> ssp. <i>asagrayana</i> <i>Lophozia longidens</i> <i>Scapania mucronata</i> <i>Solenostoma gracillimum</i></p>	<p>Unprotected mosses:</p> <p><i>Aulacomnium androgynum</i> <i>Brachythecium oxycladon</i> <i>Climacium dendroides</i> <i>Dicranum fulvum</i> <i>Dicranum spurium</i> <i>Dicranum viride</i> <i>Drepanocladus aduncus</i> <i>Drepanocladus fluitans</i> <i>Mnium spinulosum</i> <i>Orthotrichum ohioense</i> <i>Plagiomnium medium</i> <i>Polytrichum juniperinum</i> <i>Rhizomnium punctatum</i> <i>Sphagnum nemoreum</i></p>
<p>Unprotected vascular plants:</p> <p><i>Comptonia peregrina</i> <i>Diphasiastrum tristachyum</i> <i>Rubus allegheniensis</i> <i>Solidago</i> sp. } Disturbance or open area spp.</p> <p><i>Medeola virginiana</i> <i>Monotropa uniflora</i> <i>Thelypteris noveboracensis</i> } Moist forest spp.</p>	

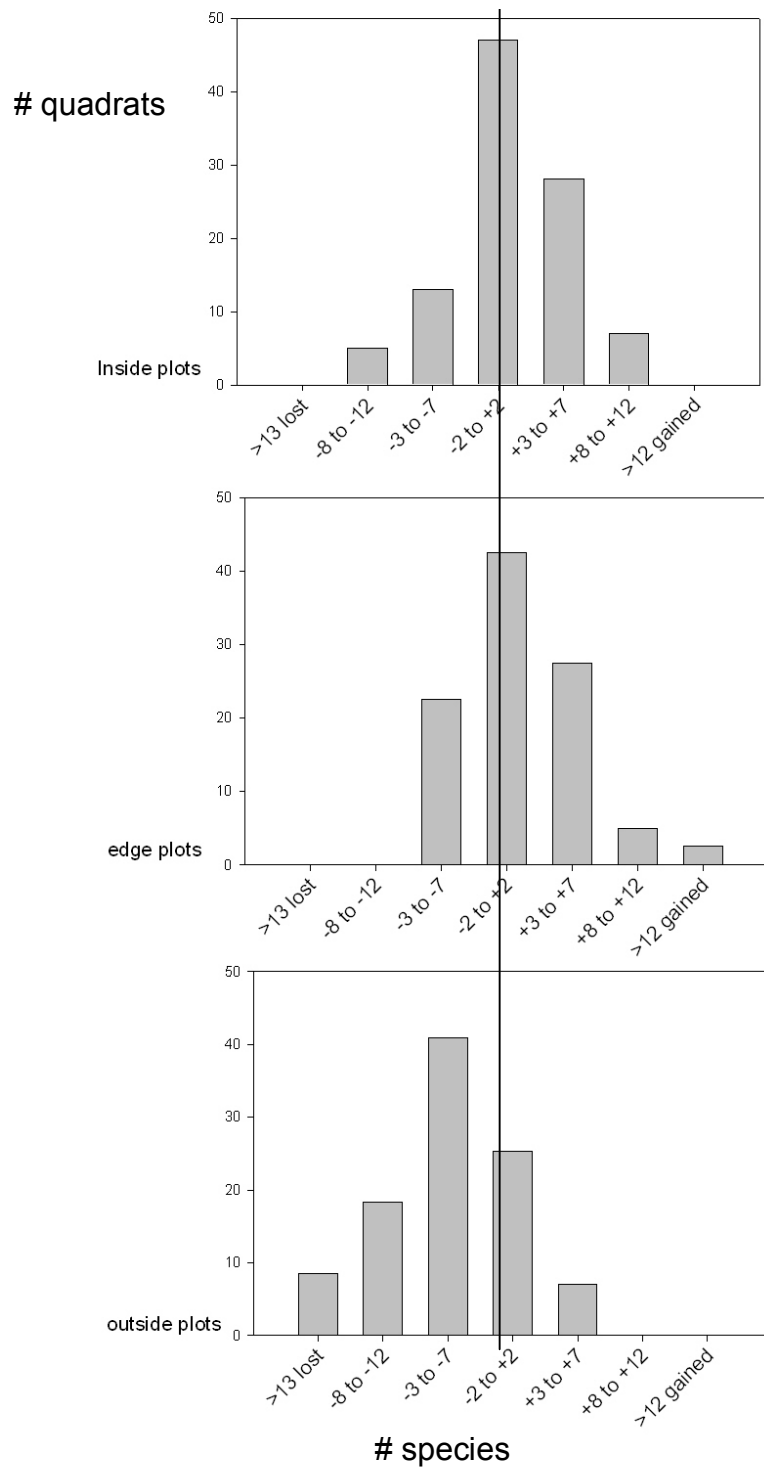


Fig. 5. Frequency distribution of bryophyte species change one year post-harvest, inside, on edge, and outside islands (pooled for 4 islands). Vertical line marks no change.

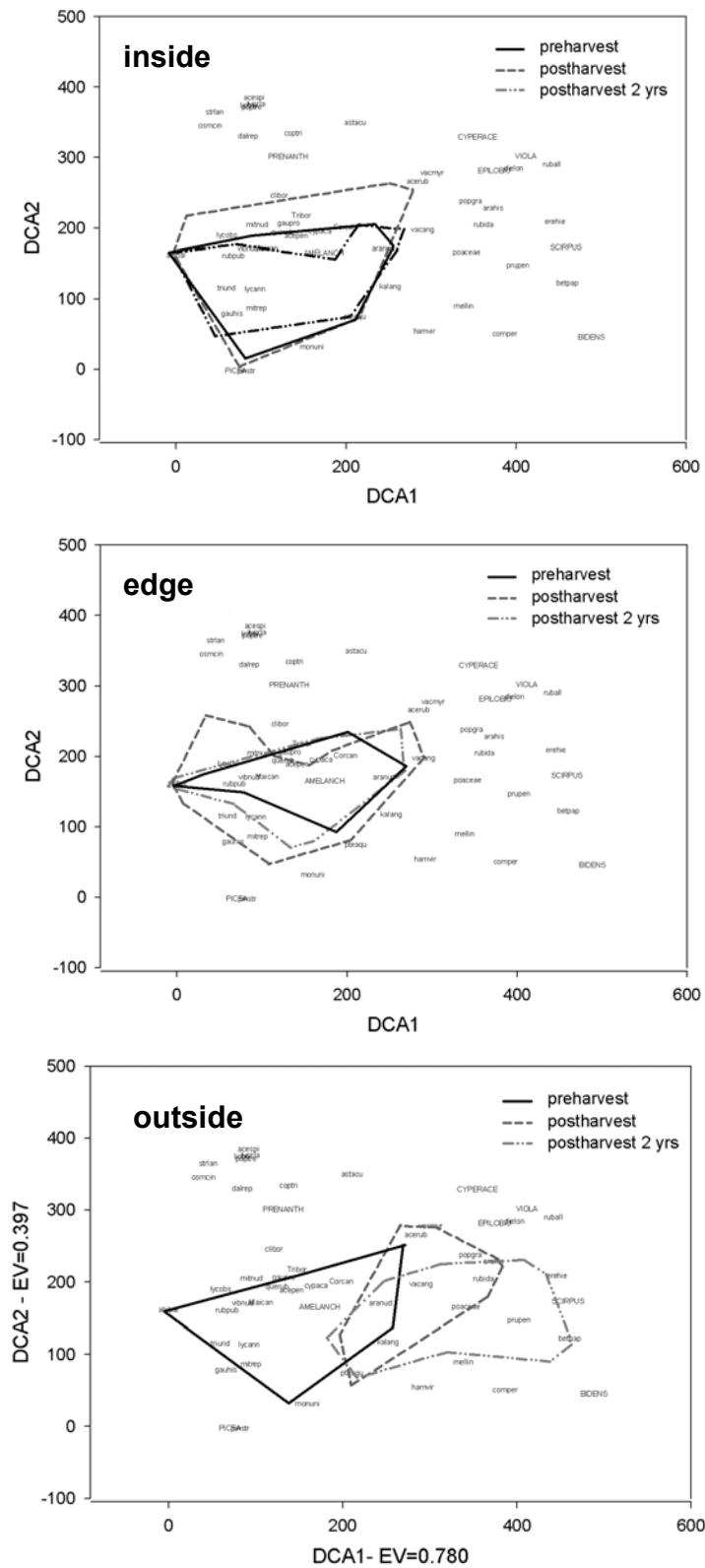


Fig. 6. Changes in vascular species composition inside, at edge, and outside 2 islands, before harvest, through years 1 and 2 after harvest. Total inertia = 6.6675.

Microclimate data require extensive manipulation and analysis which are only partially completed; however, preliminary assessment suggests that average microclimate changes related to the adjacent clearcut do not penetrate to the quadrats 25m from the edge (Fig. 7A). However, there are strong directional differences, with conditions on south and west transects much closer to those in the clearcut, and more extreme than those on north and east transects (Fig. 7B).

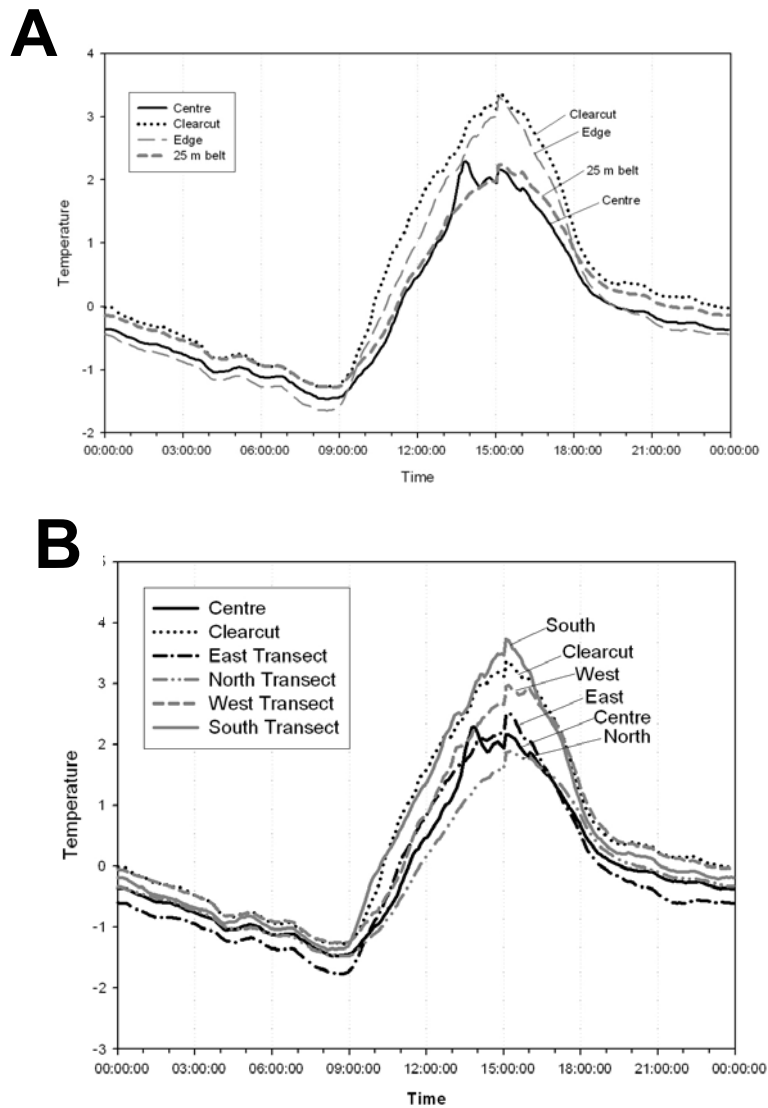


Fig. 7. Examples of daily temperature regimes for November 2004 at the Babcock Brook (BB) island. (A) Peaks for clearcut and edge are very similar, while those for centre and 25m from edge are similar and lower. (B) Average values for transects differ with direction, with peak temperatures ranked south>clearcut>west>east,centre>north.

Blowdown data have not yet been analyzed; however, preliminary assessment (Table 4) suggests that major blowdown occurred in the first year after harvest. Although the rate of blowdown has declined, it continues two years after harvest.

Table 4. Number and basal area (b.a.) of blowdown one year (2003) and two years (2004) after harvest for Holmes Brook tree islands, including data 4 additional smaller islands (I1, I2, I4, I5).

Island	Island Size (ha)	2003		2004	
		# trees	b.a.	# trees	b.a.
I1	0.50	33	5130.9	8	194.3
I2	0.25	22	4778.1	3	44.38
HB1	1.00	174	28553.7	14	404.1
I4	0.50	49	7687.9	10	212.1
I5	0.25	16	2446.0	3	66.8
HB2	1.00	32	5839.2	8	292.4
Total		326	54435.8	46	1214.1

PRELIMINARY CONCLUSIONS

- ❖ With our sampling intensity, we estimate that we captured 73% and 78% of the bryophyte and vascular species (respectively) in the area.
- ❖ The initial composition of experimental Islands is very similar to their surrounding block (high representivity), with a core of common species.
 - Islands are variable in species content, especially in vascular flora; individual islands are only locally representative.
- ❖ Inside areas of islands are dynamic in species richness and composition of both bryophytes and vascular plants; however, this must next be compared to reference areas to account for natural dynamics.
 - Understory changes inside islands are much less marked than outside, with edges intermediate but perhaps more similar to outside.
- ❖ Microclimatic “edge effect” appears to penetrate less than 25 m into island, but differs considerably with cardinal direction.
- ❖ Major blowdown occurred in first year after harvest, but continues in second year.

REFERENCES CITED

- Chen, J. 1992. Vegetation responses to edge environments in old-growth Douglas-fir forests. *Ecological Applications* 2: 387-396.
- Fenton, N.J. and K. Frego. 2004. Bryophyte (moss and liverwort) conservation under remnant canopy in managed forests. *Biological Conservation*. 122: 417-430.

Fenton, N.J., K. Frego and M. Sims. 2003. Changes in forest floor bryophyte (moss and liverwort) communities 4 years after forest harvest. *Canadian Journal of Botany* 81:714-731.

Ramovs, B.V. and M.R. Roberts. 2003. Understory vegetation and environment responses to tillage, forest harvesting, and conifer plantation development. *Ecological Applications* 13(6): 1682-1700.

Roberts, M. and Zhu. 2002. Early response of the herbaceous layer to harvesting in a mixed coniferous-deciduous forest in New Brunswick, Canada. *Forest Ecology and Management* 155: 17-31.

Ross-Davis, A.L. and K.A. Frego. 2002. Comparison of naturally regenerated clear-cuts and spruce plantations in the Acadian Forest: Forest floor bryophyte community and habitat features. *Canadian Journal of Botany* 80: 21-33.

Zhu, L. 1998. The effects of harvesting on the species composition and diversity of the herbaceous layer in a mixed forest in New Brunswick. M.Sc.F. thesis, Forestry, UNB Fredericton.

Appendix A. Species list for pooled islands and their cutblocks. N=4 1.0ha islands, each represented by 50-1m² quadrats; cutblocks represented by 40 quadrats.

(a) bryophytes

Species	Lifeform	inside	outside	at risk (only outside)
<i>Amblystegium serpens</i>	moss	•	•	
<i>Amblystegium varium</i>	moss	•	•	
<i>Anastrophyllum hellerianum</i>	liverwort	•	•	
<i>Aulacomnium androgynum</i>	moss		•	•
<i>Aulacomnium palustre</i>	moss	•	•	
<i>Bazzania denudata</i>	liverwort	•	•	
<i>Bazzania trilobata</i>	liverwort	•	•	
<i>Bazzania tricrenata</i>	liverwort		•	•
<i>Blepharostoma trichophyllum</i>	liverwort	•	•	
<i>Brachythecium campestre</i>	moss	•	•	
<i>Brachythecium oxycladon</i>	moss		•	•
<i>Brachythecium populeum</i>	moss	•	•	
<i>Brachythecium reflexum</i>	moss	•	•	
<i>Brachythecium rutabulum</i>	moss	•	•	
<i>Brachythecium salebrosum</i>	moss	•	•	
<i>Brachythecium starkei</i>	moss	•	•	
<i>Brachythecium velutinum</i>	moss	•	•	
<i>Brotherella recurvans</i>	moss	•	•	
<i>Bryhnia novae-angliae</i>	moss	•	•	
<i>Callacladium haldanianum</i>	moss	•	•	
<i>Calypogeia integristipula</i>	liverwort	•		
<i>Calypogeia muelleriana</i>	liverwort		•	•
<i>Calypogeia neesiana</i>	liverwort		•	•
<i>Campylium chrysophyllum</i>	moss	•	•	
<i>Campylium hispidulum</i>	moss	•	•	
<i>Cephalozia bicuspidata</i>	liverwort	•	•	
<i>Cephalozia connivens</i>	liverwort		•	•
<i>Cephalozia lunulifolia</i>	liverwort	•	•	
<i>Chiloscyphus pallescens</i>	liverwort		•	•
<i>Climacium dendroides</i>	moss		•	•
<i>Dicranum bonjeanii</i>	moss	•	•	
<i>Dicranum flagellare</i>	moss	•	•	
<i>Dicranum fulvum</i>	moss		•	•
<i>Dicranum fuscescens</i>	moss	•	•	
<i>Dicranum montanum</i>	moss	•	•	
<i>Dicranum ontariense</i>	moss	•	•	
<i>Dicranum polysetum</i>	moss	•	•	
<i>Dicranum scoparium</i>	moss	•	•	
<i>Dicranum spurium</i>	moss		•	•
<i>Dicranum undulatum</i>	moss	•		
<i>Dicranum viride</i>	moss		•	•
<i>Drepanocladus fluitans</i>	moss			•
<i>Drepanocladus aduncus</i>	moss		•	•

Species	Lifeform	inside	outside	at risk (only outside)
<i>Drepanocladus exannulatus</i>	moss	•		
<i>Drepanocladus uncinatus</i>	moss	•	•	
<i>Eurhynchium pulchellum</i>	moss	•	•	
<i>Frullania bolanderi</i>	liverwort		•	•
<i>Frullania brittonae</i>	liverwort			•
<i>Frullania eboracensis</i>	liverwort	•	•	
<i>Frullania eboracensis</i>	liverwort		•	•
<i>Frullania inflata</i>	liverwort	•		
<i>Frullania oakesiana</i>	liverwort	•	•	
<i>Frullania tamarisci</i> ssp. <i>asagrayana</i>	liverwort		•	•
<i>Geocalyx graveolens</i>	liverwort	•	•	
<i>Herzogiella striatella</i>	moss	•	•	
<i>Herzogiella turfacea</i>	moss	•	•	
<i>Hylocomium splendens</i>	moss	•	•	
<i>Hypnum cupressiforme</i>	moss	•	•	
<i>Hypnum fertile</i>	moss	•		
<i>Hypnum imponens</i>	moss	•	•	
<i>Hypnum pallescens</i>	moss	•	•	
<i>Hypnum pallescens</i> var. <i>protuberans</i>	moss	•	•	
<i>Isopterygium muellerianum</i>	moss	•		
<i>Jamesoniella autumnalis</i>	liverwort	•	•	
<i>Jungermannia leiantha</i>	liverwort	•	•	
<i>Lepidozia repens</i>	liverwort	•	•	
<i>Leptodictyum trichopodium</i>	moss	•	•	
<i>Lophocolea heterophylla</i>	liverwort	•	•	
<i>Lophozia longidens</i>	liverwort		•	•
<i>Mnium marginatum</i>	moss	•		
<i>Mnium spinulosum</i>	moss		•	•
<i>Nowellia curvifolia</i>	liverwort	•	•	
<i>Oncophorous wahlenbergii</i>	moss	•	•	
<i>Orthotrichum ohioense</i>	moss		•	•
<i>Orthotrichum speciosum</i>	moss	•	•	
<i>Plagiothecium cavifolium</i>	moss	•	•	
<i>Plagiomnium ciliare</i>	moss	•	•	
<i>Plagiomnium cuspidatum</i>	moss	•	•	
<i>Plagiothecium denticulatum</i>	moss	•	•	
<i>Plagiothecium laetum</i>	moss	•	•	
<i>Plagiomnium medium</i>	moss		•	•
<i>Platygyrium repens</i>	moss	•	•	
<i>Pleurozium schreberi</i>	moss	•	•	
<i>Pohlia nutans</i>	moss	•	•	
<i>Polytrichum commune</i>	moss	•	•	
<i>Polytrichum juniperinum</i>	moss		•	•
<i>Polytrichum ohioense</i>	moss	•		
<i>Ptilidium ciliare</i>	liverwort	•	•	
<i>Ptilium crista-castrensis</i>	moss	•	•	
<i>Ptilidium pulcherrimum</i>	liverwort	•	•	

Species	Lifeform	inside	outside	at risk (only outside)
<i>Radula complanata</i>	liverwort	•	•	
<i>Rhizomnium punctatum</i>	moss		•	•
<i>Rhytidiadelphus subpinnatus</i>	moss	•		
<i>Rhytidiadelphus triquetrus</i>	moss	•	•	
<i>Scapania mucronata</i>	liverwort		•	•
<i>Solenostoma gracillimum</i>	liverwort		•	•
<i>Sphagnum girgensohnii</i>	moss	•	•	
<i>Sphagnum nemoreum</i>	moss		•	•
<i>Sphagnum subtile</i>	moss	•		
<i>Tetraphis pellucida</i>	moss	•	•	
<i>Ulotia coarctata</i>	moss	•	•	
<i>Ulotia crispa</i>	moss	•	•	

(b) vascular plants

Species	inside	outside	at risk (only outside)
<i>Abies balsamea</i>	•	•	
<i>Acer pensylvanicum</i>	•	•	
<i>Acer rubrum</i>	•	•	
<i>Alnus incana</i>	•	•	
<i>Alnus viridis</i>	•		
AMELANCHIER	•	•	
<i>Apocynum androsaemifolium</i>	•		
<i>Aralia nudicaulis</i>	•	•	
<i>Aster acuminatus</i>	•	•	
ASTER	•	•	
<i>Aster macrophyllus</i>	•	•	
<i>Betula papyrifera</i>	•		
<i>Betula populifolia</i>	•		
<i>Brachyelytrum septentrionale</i>	•	•	
<i>Chimaphila umbellata</i>	•		
<i>Clintonia borealis</i>	•	•	
<i>Comptonia peregrina</i>		•	•
<i>Coptis trifolia</i>	•	•	
<i>Cornus canadensis</i>	•	•	
<i>Corylus cornuta</i>	•	•	
<i>Cypripedium acaule</i>	•	•	
CYPERACEAE	•	•	
<i>Dalibarda repens</i>	•	•	
<i>Diervilla lonicera</i>	•	•	
<i>Epigaea repens</i>	•		
<i>Gaultheria hipidula</i>	•	•	
<i>Gaultheria procumbens</i>	•	•	
<i>Hamamelis virginiana</i>	•	•	
<i>Kalmia angustifolia</i>	•	•	
<i>Linnaea borealis</i>	•	•	
<i>Lonicera canadensis</i>	•	•	
<i>Lycopodium annotinum</i>	•	•	

Species	inside	outside	at risk (only outside)
<i>Lycopodium clavatum</i>	•	•	
<i>Lycopodium dendroideum</i>	•	•	
<i>Lycopodium obscurum</i>	•	•	
<i>Diphasiastrum tristachyum</i>		•	•
<i>Maianthemum canadense</i>	•	•	
<i>Medeola virginiana</i>		•	•
<i>Melampyrum lineare</i>	•		
<i>Mitella nuda</i>	•	•	
<i>Mitchella repens</i>	•	•	
<i>Monotropa uniflora</i>		•	•
<i>Nemopanthus mucronatus</i>	•	•	
<i>Osmunda cinnamomea</i>	•	•	
<i>Osmunda claytoniana</i>	•		
<i>Petasites frigidus</i>	•	•	
<i>Picea glauca</i>	•		
<i>Picea marianna</i>	•		
<i>Picea rubens</i>	•		
<i>Pinus strobus</i>	•	•	
PLATANThERA	•		
POACEAE	•	•	
<i>Populus grandidentata</i>	•	•	
<i>Populus tremuloides</i>	•	•	
<i>Prenanthes trifoliolata</i>	•		
<i>Pteridium aquilinum</i>	•	•	
PYROLA	•		
<i>Quercus rubra</i>	•	•	
<i>Rhododendron groenlandicum</i>	•		
<i>Rubus allegheniensis</i>		•	•
<i>Rubus pubescens</i>	•	•	
SOLIDAGO		•	•
<i>Sorbus americana</i>	•	•	
SPIREA	•	•	
<i>Streptopus lanceolatus</i>	•	•	
<i>Thelypteris noveboracensis</i>		•	•
<i>Trientalis borealis</i>	•	•	
<i>Trillium undulatum</i>	•	•	
<i>Uvularia sessilifolia</i>	•	•	
<i>Vaccinium angustifolium</i>	•	•	
<i>Vaccinium myrtilloides</i>	•	•	
<i>Viburnum nudum</i>	•	•	
VIOLA	•	•	



Partners in Sustainability/Partenaires pour durabilité

Atlantic Society of Fish and Wildlife Biologists
Canadian Institute of Forestry
Canadian Forest Service
City of Moncton
Conservation Council of New Brunswick
Eel Ground First Nation
Elgin Eco Association
Environment Canada
Fawcett Lumber Company
Fisheries and Oceans Canada
Fundy Environmental Action Group
Fundy National Park
Greater Fundy Ecosystem Research Group
Indian and Northern Affairs Canada
INFOR Inc.
J.D. Irving, Limited
K.C. Irving Chair in Sustainable Development, Université de Moncton
Maritime College of Forest Technology
NB Department of Environment and Local Government
NB Department of Natural Resources and Energy
NB Federation of Naturalists
NB Federation of Woodlot Owners
NB Premier's Round Table on the Environment & Economy
NB School District 2
NB School District 6
Nova Forest Alliance
Petitcodiac Sportsman's Club
Red Bank First Nation
Remsoft Inc.
Southern New Brunswick Wood Cooperative Limited
Sussex & District Chamber of Commerce
Sussex Fish and Game Association
Town of Sussex
Université de Moncton
University of New Brunswick Fredericton Faculty of Forestry and Environmental
Management
University of New Brunswick Saint John
Village of Petitcodiac
Washademoak Environmentalists